

# AREA 52 GOLD TARGET

Geological/Structural Setting



TSX:BAR

**BALMORAL**  
RESOURCES

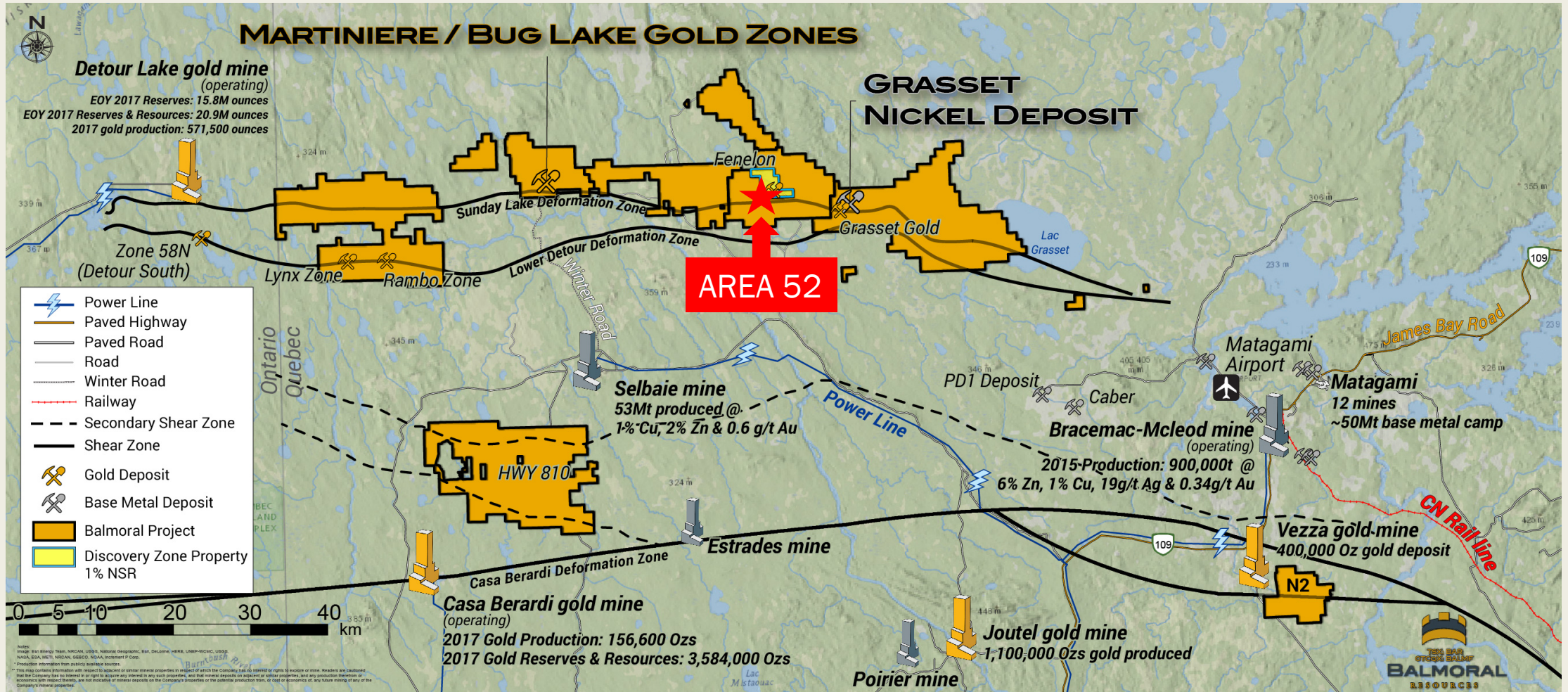
July 2019

# Disclosure statement

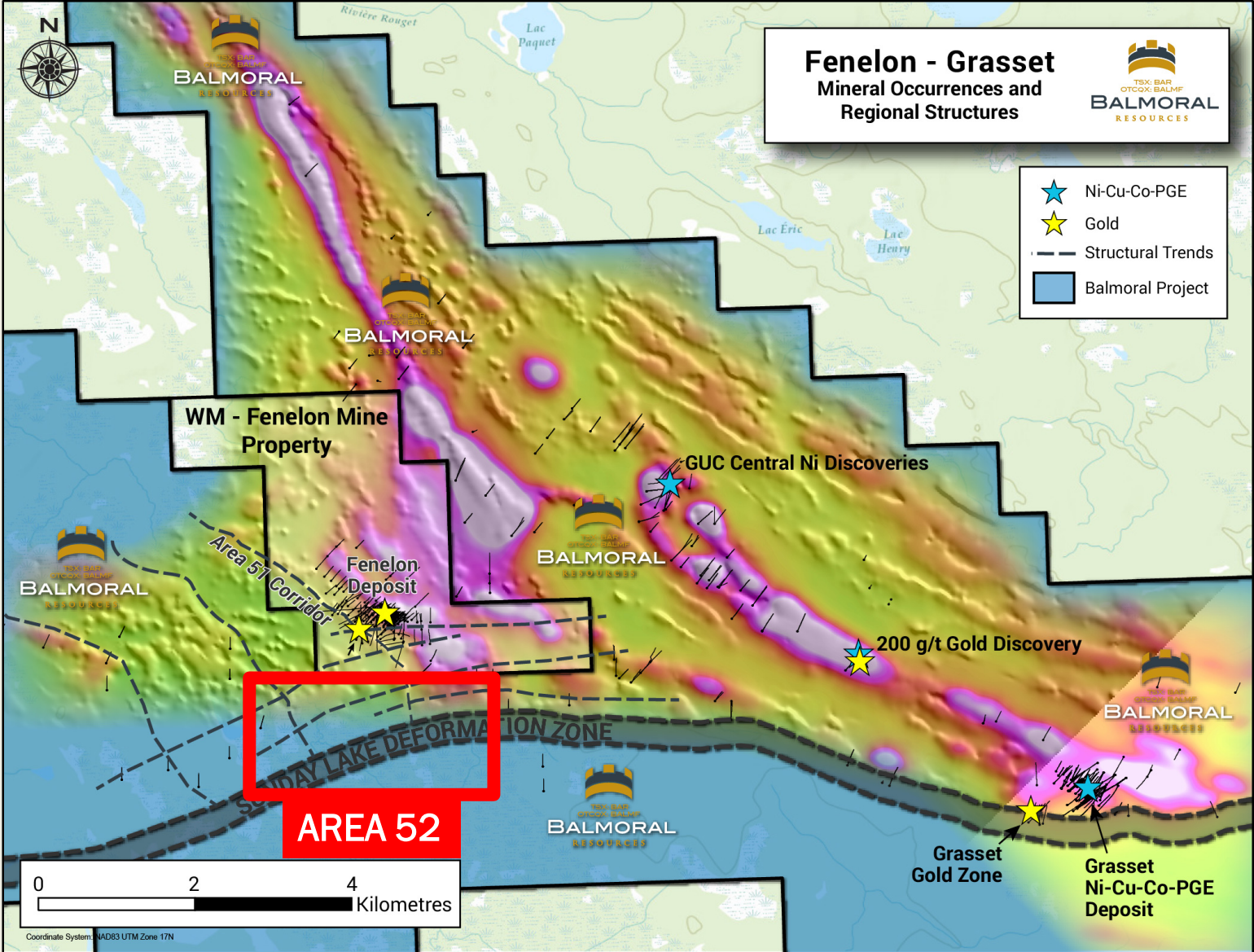
- This presentation is prepared by Balmoral Resources Ltd. (“Balmoral or BAR”) management and BAR is solely responsible for content and format. Darin W. Wagner, P. Geo is a non-independent Qualified Person and has compiled this presentation from publicly available industry information, NI43-101 compliant technical reports and new releases with specific underlying Qualified Persons as set out in the releases and reports. Industry Information has been compiled from publicly available sources and may not be complete, up to date or reliable. Forward looking statements may differ materially from actual events. Please see complete information on SEDAR ([www.sedar.com](http://www.sedar.com)).
- This presentation is for information purposes only and is not a solicitation. Please consult the Company for complete information and a Registered Investment Representative prior to making any investment decisions. This presentation reports on the technical details of the company’s projects up to July 17<sup>th</sup>, 2019 and provides a guide to the company’s potential future activities and use of funds. There can be no assurance that the company objectives will be achieved.
- Inferred Resources may be reported. The US Securities and Exchange Commission does not recognize the reporting of Inferred Resources. These resources are reported under Canadian National Instrument 43-101 and have a great amount of uncertainty and risk as to their existence and economic and legal feasibility. It cannot be assumed that all or any part of Inferred Resources will ever be upgraded to a higher category. Under Canadian Rules estimates of Inferred Mineral Resources may not form the sole basis of feasibility studies or pre-feasibility studies. INVESTORS ARE CAUTIONED NOT TO ASSUME THAT PART OR ALL OF AN INFERRED RESOURCE EXISTS, OR ARE ECONOMICALLY OR LEGALLY MINEABLE.
- The Company may access safe harbor rules.
- This presentation may also refer to historic geological resources – identified by an asterisk \* in the text – these resources are historic in nature and pre-date the implementation of Canadian National Instrument 43-101. Neither the Canadian nor the US Securities and Exchange Commission recognize the reporting of historic resources they are considered conceptual in nature. It cannot be assumed that all or any part of geological resources will ever be upgraded to a higher category. INVESTORS ARE CAUTIONED NOT TO ASSUME THAT PART OR ALL OF GEOLOGICAL RESOURCES EXISTS, OR ARE ECONOMICALLY OR LEGALLY MINEABLE. They are included herein solely for historic context and completeness.
- The TSX has not reviewed and does not accept responsibility for the accuracy or adequacy of this presentation, which has been prepared by management. There can be no assurance that any of the assumptions in the resource estimates will be supported by a Pre-feasibility or Feasibility Study or that any forward looking event will come to pass. The data is incomplete and considerable additional work will be required to complete further evaluation, including but not limited to drilling, engineering and socio-economic studies and investment.
- This presentation contains information with respect to adjacent or similar mineral properties in respect of which the Company has no interest or rights to explore or mine. Readers are cautioned that the Company has no interest in or right to acquire any interest in any such properties, and that mineral deposits on adjacent or similar properties are not indicative of mineral deposits on the Company’s properties. Past performance is no guarantee of future performance and all investors are urged to consult their investment professionals before making an investment decision. Investors are further cautioned that past performance is no guarantee of future performance

# Area 52 Gold Target

The Area 52 gold target occurs on Balmoral's Fenelon property, south of the Fenelon gold deposit, 80 kms east along the Sunday Lake deformation zone from the 20+ million ounce Detour Lake gold mine



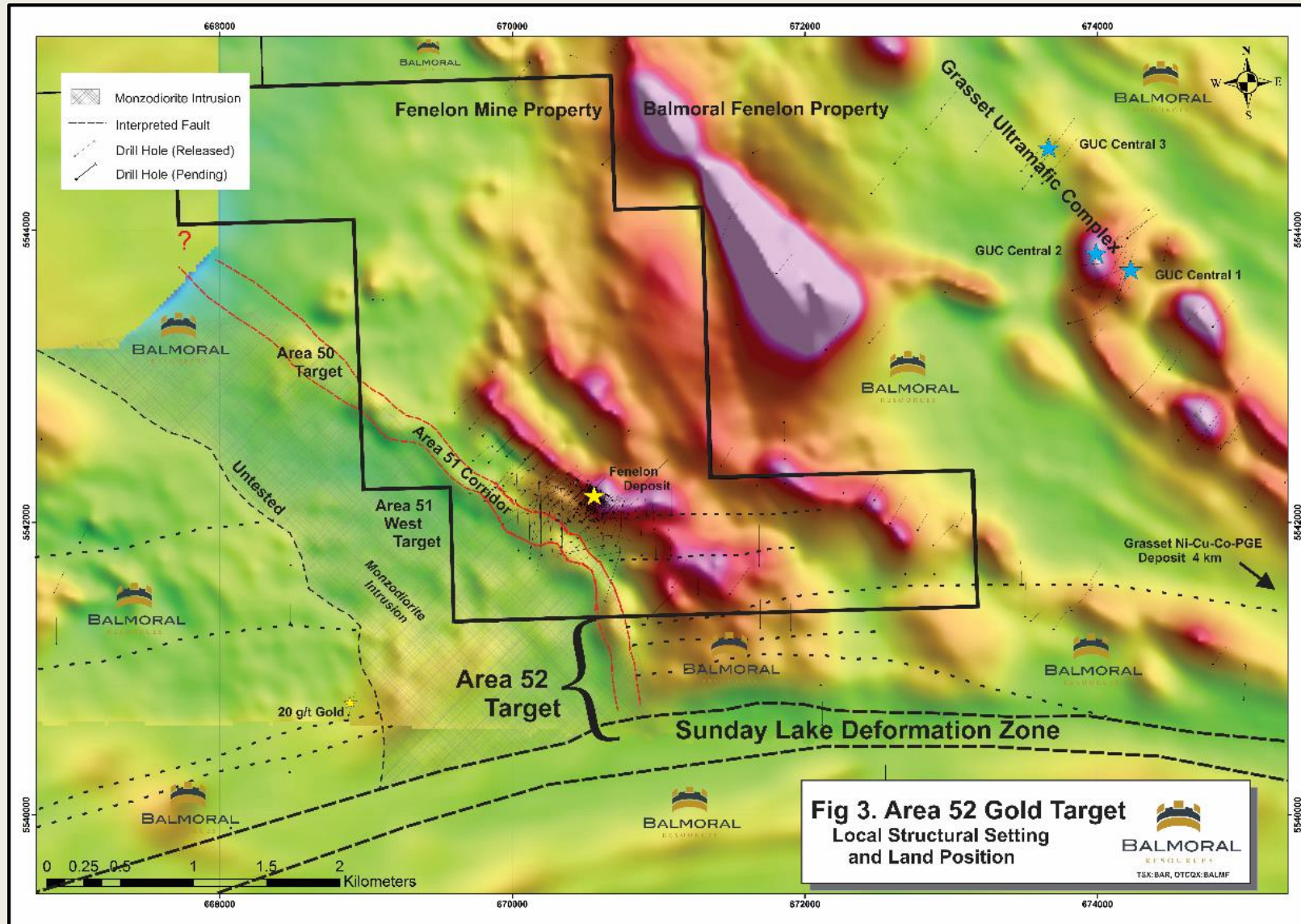
# Intersection of 2 Gold Bearing Fault Systems



Area 52 occurs at the intersection of the regional-scale Sunday Lake deformation zone (host to the Detour Lake gold mine) and the recently identified Area 51 fault corridor.

Both structures are known to be gold mineralized and the area of intersection of these two features should be the focus of the greatest degree of structural disruption in the area – and therefore the area with the greatest potential to provide dilation for the formation of gold bearing vein mineralization

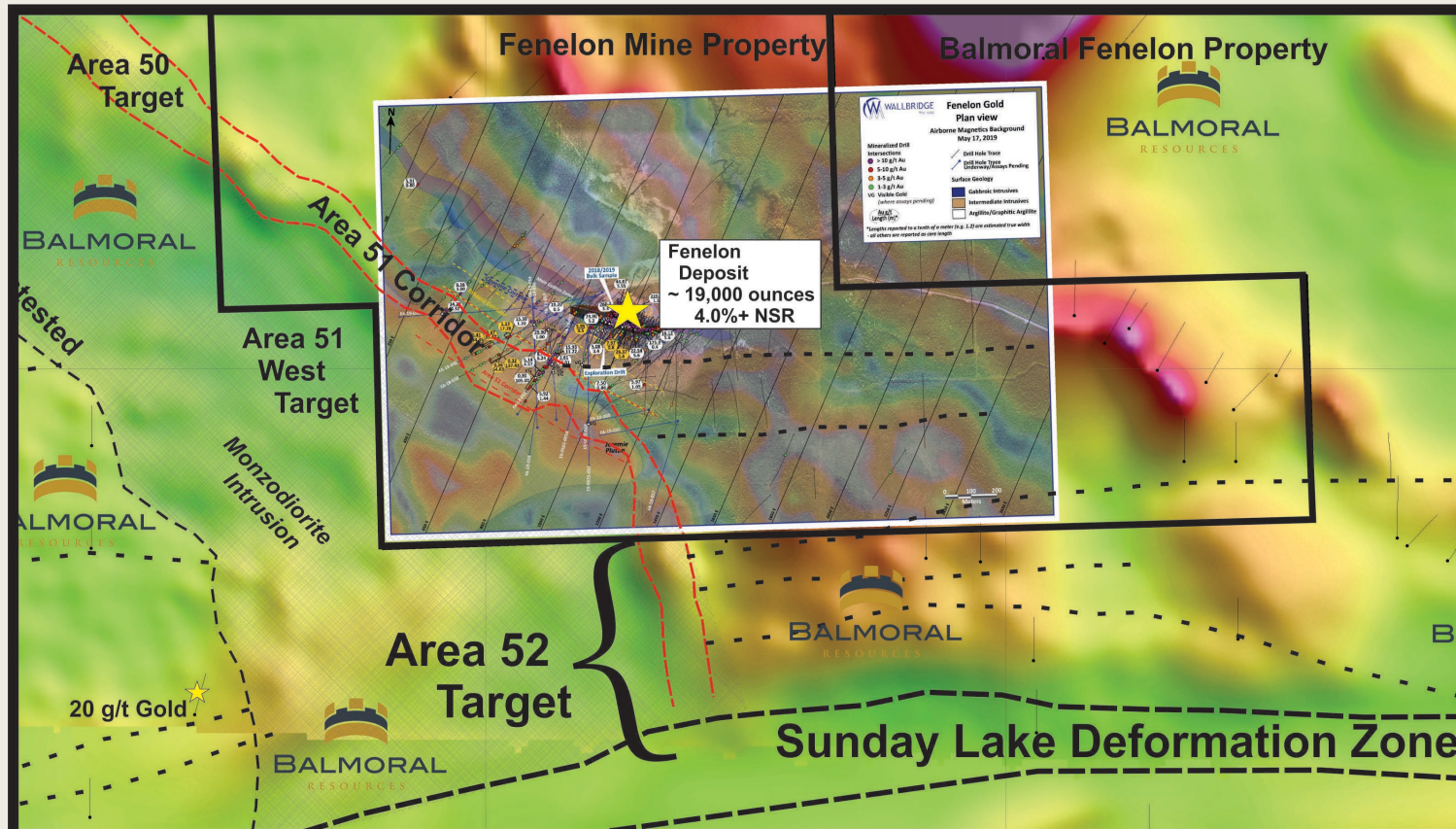
# Dominant Land Position



Balmoral's dominant land position means that it controls both the southeast and northwestern continuation of the new Area 51 gold corridor

BAR also controls the bulk of the host intrusion and importantly the intersection of the Area 51 corridor and the Sunday Lake deformation zone. This area of confluence of gold bearing structures is the untested Area 52 target where BAR has now commenced initial testing.

# Area 52 Targeting



**Figure 2: Area 52 Target**

Map displays the location of the Area 52 target, Balmoral's airborne magnetic data, the location of the monzodiorite intrusion (hatched), property outlines and recent drilling along the Area 51 corridor (inset to scale). Balmoral's holdings surround the Fenelon Mine Property. The corridor is untested on Balmoral's property as is a large segment of the Sunday Lake deformation zone.

Inset source: [www.wallbridgemin.com/s/fenelon.asp](http://www.wallbridgemin.com/s/fenelon.asp)

Recent drilling on the adjacent Fenelon Mine property along the Area 51 corridor has intersected both broad low-grade and narrower high-grade gold mineralization within approximately 300 metres of Balmoral's property holdings both Area 52 and Area 51 West – with the system wide open.

Gold in this corridor appears to be most abundant where it is intersected by east-west secondary faults, which are more abundant to the south as the major Sunday Lake deformation zone is approached.

# Area 52 – Target Mineralization



Two Styles of gold mineralization are targeted in Area 52:

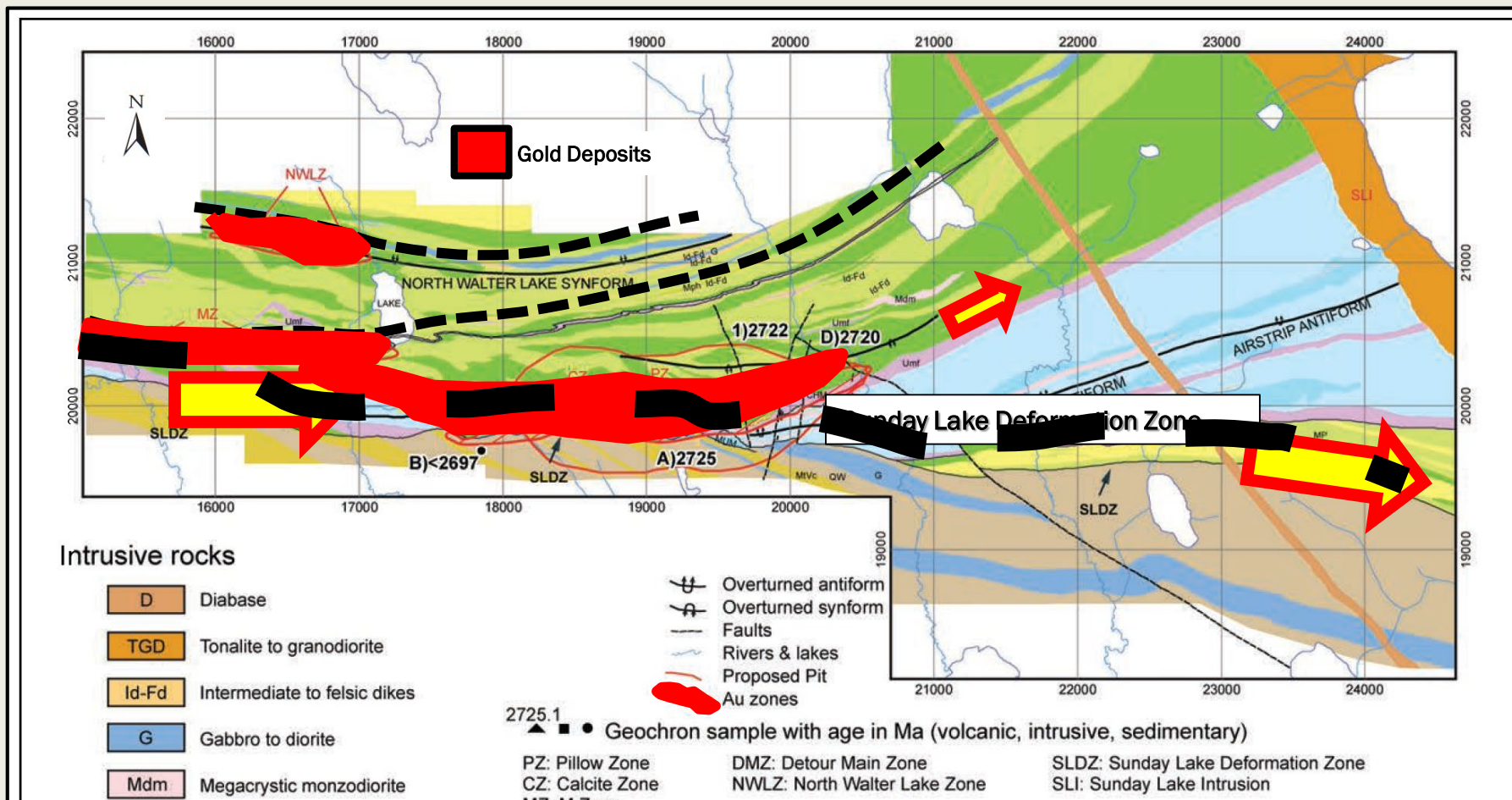
1. Broad low-grade to very high-grade, fracture filling vein hosted gold mineralization within the monzodiorite intrusion – brittle failure of the host rock to create fracture networks filled by gold mineralized quartz veins.
2. Shear hosted gold mineralization in the rocks which surround the more massive, brittle intrusive body. These rocks typically experience more strain and deform to a greater degree. They are also more more chemically reactive with increased sulphide content.

*Note both samples are from the Thunder Creek gold deposit in Timmins which occurs in a similar structural setting*

# Detour Lake Gold Deposit

The Detour Lake Gold Deposit, at > 20 million ounces, is located 80 km to the west along the same geological contact/structure as the one being targeted in Area 52.





The Detour gold mineralization aligns with the Sunday Lake deformation zone and occurs where it and favourable rock units meet the main deformation corridor – like in Area 52!







# Thank You

-  John Foulkes, V.P. Corporate Development
-  +1 604 638 5815; toll free +1 877 838 3664
-  [info@balmoralresources.com](mailto:info@balmoralresources.com)
-  [www.balmoralresources.com](http://www.balmoralresources.com)